

# NOVOMINE INDIA PRIVATE LIMITED

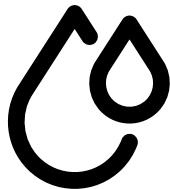
“ALL CREATION IS A MINE, AND EVERY MAN A MINER”  
- ABRAHAM LINCOLN



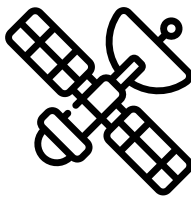
## OUR SERVICES:



Exploration &  
Mining



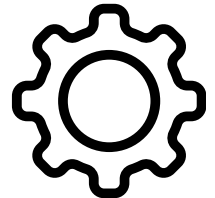
Hydrogeology



Geospatial



Environment



Geotechnical



[www.novomineindia.com](http://www.novomineindia.com)



[novomineceo@gmail.com](mailto:novomineceo@gmail.com)  
[hrnovomine@gmail.com](mailto:hrnovomine@gmail.com)



+91-8240035799  
+91-8240014632



**Mr. Palash Chakraborty**  
(Founder & CEO)

The Indian mining consulting market has seen remarkable growth, driven by government initiatives like the National Mineral Policy 2019 and Atmanirbhar Bharat. These policies have boosted domestic mining, foreign investment, and exploration activities, creating a strong demand for consulting services. However, customers face unique challenges, including diverse land tenures, Sixth Schedule legal complexities, and a lack of scientific mining practices. Novomine India is a QCI-NABET accredited consulting firm specializing in comprehensive mining services, including Survey, Exploration, Geological Modeling, Mine Planning, and Environmental Impact Assessments.

Since its establishment, Novomine India has swiftly become a leader in mining consulting, specializing in services throughout the mining lifecycle. The company has collaborated on several blocks of minor & major minerals and engaged in diverse coal and non-coal projects all over India. The company has also successfully completed large-scale mineral exploration projects across complex terrains in North East India, focusing on coal, iron ore, limestone, and rare earth minerals, reflecting its dedication to excellence in the mining sector. "The firm has secured approval from the Ministry of Coal for multiple mining plans, similar such projects are ongoing at the IBM, MOEF&CC as well as the state departments, all over India ", says Palash Chakraborty, Founder & CEO, Novomine India.



## Our Key Consulting Services

From exploration to closure, we deliver precision-driven mining solutions that protect communities and the planet.



### Mineral Exploration & Drilling Services

Topographic Survey, Geological Mapping, Geophysical & Geochemical Interpretation, Due-diligence, Feasibility & Pre-feasibility Studies, Drilling Services & Supervision, Core Logging, Report Preparation



### Resource Evaluation & Mine Planning

3D geological and resource modeling (UNFC / JORC), mine infrastructure designing and scheduling



### Hydrological Services

Groundwater Systems, Surface Hydrology, Urban Water Systems, Ecosystem, Governance & Policy



### Environmental Consultancy

Baseline data collection & assessment; Preparation of statutory documentation, EIA/EMP report preparation, environmental clearance, CTE & CTO



### Geotechnical Support

Sub-surface Investigation, Laboratory Analytics, Slope Stability & Rock Mechanics, Foundation Engineering, Ground Improvement Solutions



### Remote Sensing & GIS-Based Support

GIS and data management for seamless integration of field-to-model deliverables



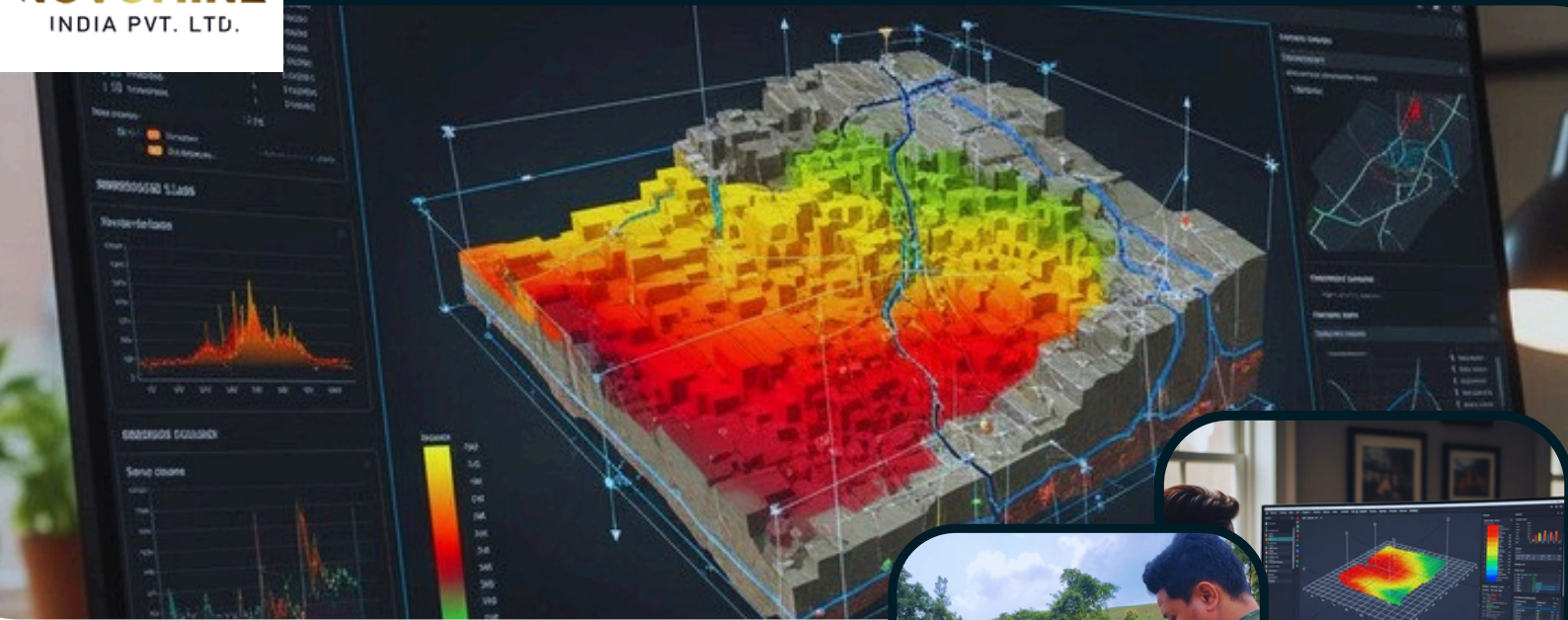
### Auction Support

Auctionable Block Decision Support



### Mine Closure, Reclamation & Rehabilitation

Transition to eco-friendly methods and boost long-term productivity.



## **NOVOMINE INDIA: PIONEERING FUTURE- FOCUSED CONSULTING**

Novomine India is a forward-thinking consulting firm that provides integrated solutions in geology, mining, and environmental sectors. With QCI-NABET accreditation, UDYAM Registration, and ISO 9001:2015 certification, Novomine is committed to redefining precision mining through regulatory integrity and technical excellence.

**Specialized Services:** We are designed to offer a variety of specialized services in exploration, geology, mining, and environmental management. Our team comprises a dynamic blend of enthusiastic young professionals, guided by experienced and highly qualified experts who have excelled in numerous exploration projects, including Mining Plans, Geological Reports, and the preparation and approval of EIA-EMP reports throughout India.



## **OUR VISION**

**Our vision is to be the go-to geological and mining advisory partner bridging Indian mineral expertise to international exploration and development projects.**

**Predictive Science Approach:** Utilizing the “Mineral Systems Analysis framework,” Novomine India views exploration as a predictive science. We decode the geological processes that influence mineral formation, allowing us to target deposits with both precision and efficiency.

**Commitment to Quality:** Since our establishment, Novomine has earned a reputation for technical reliability, field efficiency, and data integrity. We assist clients across India in converting raw geological data into actionable resource intelligence.

# WHY NOVOMINE?

- Full-spectrum capability: one partner covering survey → drilling → lab → modelling → planning
- Technically aware & field-experienced: strong & agile team handling India's challenging mineral terrains
- Accredited & compliant: certified for mineral exploration, GR & mine planning and environmental services
- Sustainability anchored: committed to environmentally sensitive mining and circular-economy thinking
- Global readiness: outputs designed following international reporting norms and overseas clients

Full-spectrum capability

Technically aware & field-experienced

Accredited & compliant

Sustainability anchored

Global readiness



## Commitment to Quality

Since its establishment, Novomine has earned a reputation for technical reliability, field efficiency, and data integrity.

## OUR CREDENTIALS

ISO



ISO 9001:2015  
CERTIFIED

APA-  
MPPA



QCI-NABET  
CERTIFICATE OF  
ACCREDITATION FOR  
APA-MPPA

AEA



QCI-NABET  
CERTIFICATE OF  
ACCREDITATION FOR  
AEA

EIA-CO



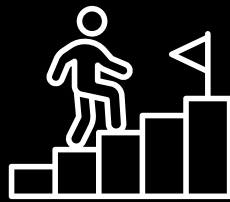
QCI-NABET  
CERTIFICATE OF  
ACCREDITATION FOR  
EIA-CO

UDYAM  
MSME



UDYAM MSME  
REGISTRATION  
CERTIFICATE

# Our Success Story



Novomine India stands as a shining example of growth, excellence, and innovation in the mining consultancy sector. Our strength lies in the perfect synergy of energetic young professionals working under the guidance of dynamic, pragmatic, and highly qualified advisors who have proven their expertise across numerous exploration projects, Mining Plans, Geological Reports, and EIA-EMP report preparations and approvals throughout India.

“The firm has earned approvals from the Ministry of Coal for several mining plans, with many more projects currently under review at IBM, MoEF&CC, and various State Departments,” says Palash Chakraborty, CEO & Director, Novomine India. The company has successfully completed over 130 minor mineral projects and participated in multiple coal and non-coal initiatives across Meghalaya and West Bengal.

We specialize in planning and executing large-scale mineral exploration programs across India’s diverse geological terrains, with capabilities extending to international projects. Our expertise covers critical and strategic minerals as well as major and minor commodity groups. These achievements reflect our sustained commitment to advancing mineral discovery, resource development, and the overall growth of India’s exploration industry.



We take immense pride in being the only firm from the North-Eastern Region (NER) accredited by QCI-NABET as a Prospecting Agency (APA), Mining Plan Preparing Agency (MPPA), and Exploration Agency (AEA). In addition, Novomine India is ISO 9001:2015 certified and Udyam registered (No. UDY-AM-ML-04-0000904)—further solidifying our credibility and commitment to quality and compliance.



Our recent achievements include securing two base metal exploration projects from the Ministry of Mines under the NMEDT Fund in Odisha—an acknowledgment of our technical capabilities and trustworthiness. Since its inception, Novomine India has rapidly emerged as a leader in mining consultancy, offering end-to-end solutions across the entire mining lifecycle.



Our team played a significant role in planning two of India’s largest mining projects: Gevra (25 MTPA) & Dipka (20 MTPA). These projects were groundbreaking for being the first in India to utilize 42 cubic meter shovels and 240-ton dumpers. Our experts have also contributed to many other mines with capacities up to 20 MTPA, incorporating the use of Draglines.

# Inhouse Rig Capacity

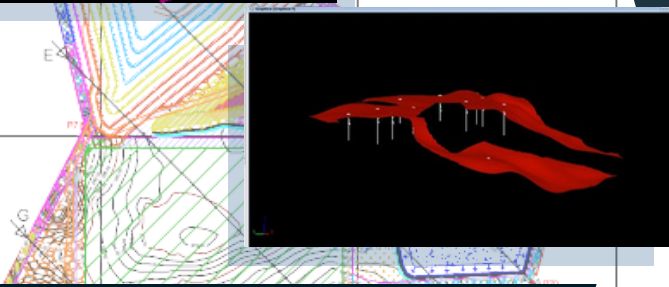
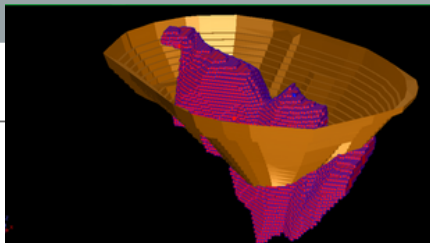
Novomine has **14 inhouse** drilling rigs with depth capacity of upto **1000 m.**

## Key Technical Capabilities:

- Drilling Fluid Management
- Tool & bit optimization
- Additive & Lubricant Engineering
- Structural Core Orientation
- Recovery Audit & Gap Management
- Downhole Geophysical Logging & QA/QC

# Mineral Exploration & Drilling Services

- Mineral Exploration Targeting: Identify prospective zones using integrated geological, geophysical, and geochemical data.
- Topographical Survey: Acquire accurate digital elevation models and terrain data for exploration planning.
- Geological Mapping: Characterize lithology, stratigraphy, and mineralized zones through detailed field studies.
- Remote Sensing Surveys: Use satellite imagery for alteration mapping and identifying mineralization indicators.
- Geophysical Exploration: Apply methods like resistivity and magnetic to characterize subsurface structures.
- Geochemical Analysis: Evaluate soils, sediments, and rocks to understand geochemical signatures related to ore.
- Exploratory Drilling: Execute drilling programs for subsurface data and mineralization evaluation.
- Feasibility Studies: Assess economic viability, deposit geometry, and environmental impacts of mining.
- Geological Report Preparation: Compile geological documentation, including methodology and resource estimates.
- Legal & Regulatory Clearances: Manage approvals and compliance with environmental and mining regulations.



# Resource Evaluation & Mine Planning

- Resource Evaluation & Reserve Estimation: Quantification of economically extractable mineral within 3D blocks using geostatistical modeling, block modeling, and classification under UNFC and JORC codes.
- Open Pit Mine Design: Development of pit layouts incorporating slope stability analysis, haulage geometry, and geotechnical domain modeling.
- Underground Mine Design: Effective planning for ventilation, and support systems for optimized underground extraction of structurally controlled orebodies.
- Mine Water Management: Hydrogeological assessment, dewatering design, and environmental water balance modeling.
- Mine Closure & Post-Closure Planning: Formulation of closure strategies including landform reconstruction, geochemical stabilization, and long-term environmental monitoring.

## Our Authorized Software



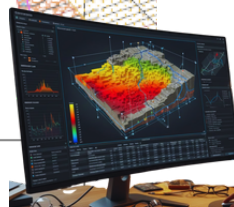
**GEOVIA Minex Version 6.5.8**



**GEOVIA SURPAC 2025**



**AutoCAD**





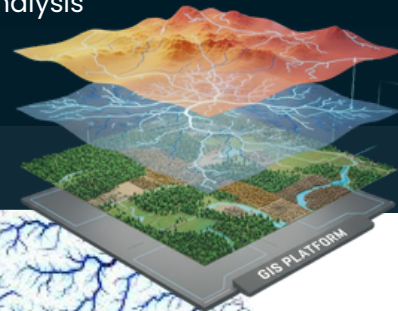
# HYDROLOGICAL, REMOTE SENSING & GIS BASED SUPPORT

## Water

- Water Resource Planning & Security
- Water Quality Management
- Mine Hydrogeology & Dewatering
- Urban Water System
- Watershed Management
- Regulatory Compliance & Certification
- Groundwater Investigation
- Ecosystem Water

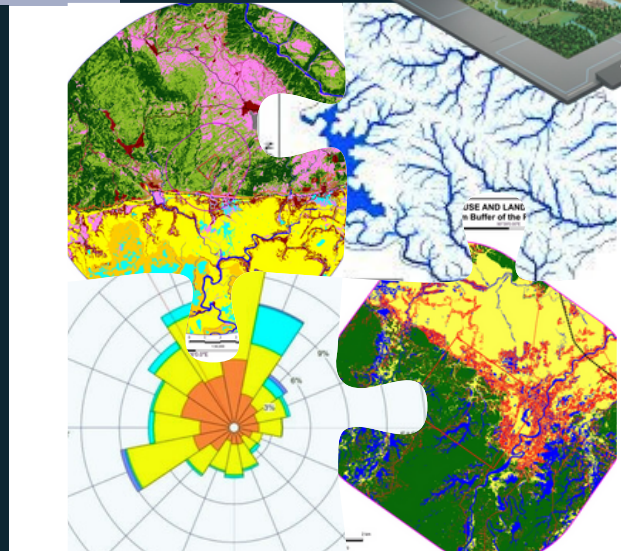
## Geospatial

- Terrain & Drainage Model
- Multi-temporal satellite data detecting ecosystem change, vegetation stress & anthropogenic impacts
- Satellite & hyperspectral analysis
- Monitoring land-use, erosion, surface water variability for adaptive management
- Database Management & Analysis



## Auction Support

- Support for Critical Mineral and Coal Block Auctions, including shortlisting and securing high-potential blocks.
- Detailed evaluation of RFP documents, with comprehensive risk identification and mitigation inputs.
- Technical assessment of the block, covering geology, mining methodology, and mineral processing aspects.
- Conceptualization and design inputs for CHP / mineral processing plants and all associated infrastructure.
- Activity-wise estimation of CAPEX and OPEX, aligned with project execution strategies.
- Transaction advisory services, including selection of Mining Contractor / MDO, preparation of detailed tender documents, and drafting of Long-term offtake/LoM service agreements.
- Development of robust financial models, including sensitivity and scenario analysis.
- End-to-end bid documentation support for competitive and compliant submissions.



## Geotechnical Services

- Subsurface investigation: Borehole drilling, coring, in-situ testing (SPT, CPT, vane shear, pressure-meter)
- Slope Stability & Rock Mechanics:
- Foundation Engineering
- Ground Improvement Solutions
- Instrumentation & Monitoring
- Laboratory Analytics



**Renowned for solving environmental challenges while minimizing liabilities and ensuring regulatory compliance, Novomine enhances environmental performance and support clients in achieving sustainable resource management and compliance objectives.**

**Accredited as a Category 'A' EIA Consultant by QCI-NABET, we provide technical guidance on pre- and post-mining regulatory compliance, environmental impact assessments, and implementation of site-specific Environmental Management Plans (EMP). We prepare EIA-EMP documentation and facilitate statutory environmental clearances from MoEF&CC and SEIAA for mining projects, integrating geospatial, hydrogeological, and ecological data to ensure compliance with national environmental standards and sustainable resource management practices.**



## Our Environmental Services Include:

- ✓ Environmental Impact Assessment (EIA)
- ✓ Social Impact Assessment (SIA)
- ✓ Ecology & Biodiversity Assessment
- ✓ Environmental & Disaster Management Plans
- ✓ Consent (CTE & CTO) & Compliance Assistance
- ✓ Project & Site Feasibility Reporting

## Mine Closure, Reclamation & Rehabilitation

For mines in their final phases, we develop closure plans and obtain approvals, leaving sustainably rehabilitated landscapes beneficial to communities, ecosystems, and corporate reputation.

Through our experts, we prepare closure concepts with comprehensive assessment and management, including waste characterization, geochemical analysis, and earthwork design for stable landforms (waste dumps, tailings storage).



Closure Plan Development & Regulatory Approvals (MoC/IBM, State Authorities)



Waste Characterization & Geochemical Assessment



Earthwork & Landform Engineering (Waste Dumps, Tailings Storage)



Soil Cover Design & Reclamation Methodologies

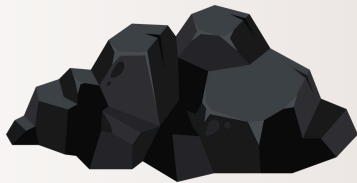


Erosion Control & Water Quality Management (AMD Treatment Systems)



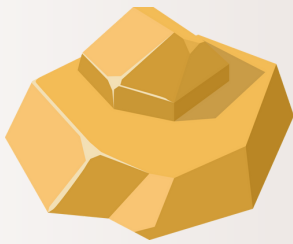
Afforestation & Vegetation Management

# Novomine's Commodity Specialization in Exploration



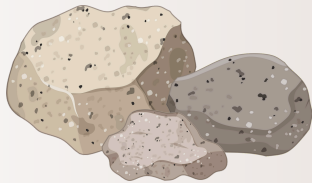
## Bulk Commodity

- Iron Ore
- Limestone
- Bauxite
- Coal



## Basemetal and Critical Minerals

- Copper
- PGE
- Lead
- Nickel
- Zinc
- Chromite
- Gold
- Manganese
- REE
- Graphite



## Minor Minerals

- Black Stone
- Dimension Stone
- Sand
- Wollastonite
- Clay



## OUR APPROACH

At Novomine India, we utilize the Mineral Systems Analysis (MSA) framework for predictive exploration, linking geological structures with mineralization signatures.

Key aspects of our approach include:

- Bridging regional understanding with project execution via geological mapping, sampling, and 3D modeling.
- Designing data-driven drilling programs to confirm orebody geometry while ensuring safety and compliance.
- Conducting environmental studies and securing regulatory clearances to streamline project approvals.
- Applying UNFC/JORC-compliant standards for transparent and accurate resource estimation.
- Integrating ESG principles to ensure sustainability and responsible land use.

Novomine maintains an uncompromising commitment to Health, Safety, and Environmental (HSE) excellence, aligned with globally recognized frameworks such as ISO 45001, ISO 14001, and IFC Performance Standards across all operations.

# Our Esteemed Board Members

WE EMBRACE LIMITLESS CREATIVITY, FOSTER OPEN COLLABORATION, AND STAY COMMITTED TO SUSTAINABILITY, ENSURING INNOVATION THAT BENEFITS BOTH PEOPLE AND THE PLANET.



Founder & CEO  
**PALASH CHAKRABORTY**



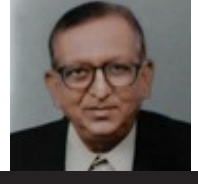
Director  
**SOUMI CHAKRABORTY**



Head of Operations (Coal)  
**DR. TAPAN K CHAKRAVARTY**



Head of Operations (Non-Coal)  
**JADAB CHANDRA DUTTA**



Chief Operating Officer  
**PULAK BARAN CHAKRABORTY**

## Meet Our Experts



**RAJESH KUMAR CHOPRA**  
Chief Principal Advisor



**PARTHA PRATIM CHAKRABARTI**  
Technical Advisor (Mining)



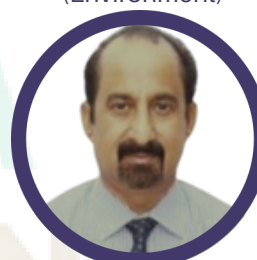
**RAKESH DWIVEDI**  
Technical Advisor (Environment)



**RAMA KANT SINGH**  
Principle Coordinator (Geophysics)



**DR. OM PRAKASH SINGH**  
Deputy Director



**DR. AKHILESH SINGH**  
Technical Advisor (Remote Sensing & GIS)



**ASHOK KANTI SANYAL**  
Principle Advisor (Ecology & Biodiversity)



**JIMUT BAHAN KAR**  
Principle Advisor (Mechanical)



**SISIR MAJUMDER**  
Technical Advisor (Survey)

**... AND MORE THAN 50+ EXPERIENCED PROFESSIONALS**

# Our Activities



## Some of Our Esteemed Clients and Partners



# NOVOMINE INDIA

*Key to Achieving Sustainability*



## Address

HeadOffice: 4th Floor, Building No.65,  
opposite to Children Hospital, Pohkseh,  
Central, Shillong, Meghalaya 793006

Corporate Office: Unit Number 7WS5D,  
7th Floor, West Block, Mani Casadona IT  
Building, Action Area II, Rajarhat, New  
Town, Kolkata, West Bengal 700156



[www.novomineindia.com](http://www.novomineindia.com)



[novomineceo@gmail.com](mailto:novomineceo@gmail.com)  
[hrnovomine@gmail.com](mailto:hrnovomine@gmail.com)



+91-8240014632  
+91-7980207297